

# **REFRIGERATION & CATERING EQUIPMENT RENTAL CATALOG**

# Contents

<b>Display Chillers - Page 3</b>
<b>Storage Chillers - Page 23</b>
<b>Display Freezers - Page 28</b>
<b>Storage Freezers - Page 39</b>
<b>Catering Equipment Electric - Page 46</b>
<b>Extractors - Page 52</b>
<b>Convection Ovens - Page 54</b>
<b>Table Top Appliances - Page 56</b>
<b>Hot Holding Equipment - Page 63</b>
<b>Preparation Equipment - Page 66</b>
<b>Coffee and Drinks - Page 72</b>
<b>Water Heaters - Page 76</b>
<b>Sinks - Page 78</b>
<b>Dish and Glass Washers - Page 81</b>



# Display Chillers

## A Series

### Serve-Over Counter

#### At a Glance

Model	A1P	A2P	A3P	A4P
Dimensions (W×D×H) mm	1290×955×1270	1890×955×1270	2485×955×1270	3090×955×1270
Volume (L)	286	429	572	715
Electrical Requirements (Watts)	447	667	923	1272
Electrical Requirements (Running Amps)	1.86	2.78	3.85	5.30
Display Area	0.83 m <sup>2</sup>	1.25 m <sup>2</sup>	1.65 m <sup>2</sup>	2.1 m <sup>2</sup>
Temperature Range	-1...+7 °C	-1...+7 °C	-1...+7 °C	-1...+7 °C
Cooling Type	Fan	Fan	Fan	Fan
Defrost Type	Automatic	Automatic	Automatic	Automatic
Lighting	Yes	Yes	Yes	Yes
Castors	Yes	Yes	Yes	Yes
Dual Temperature	No	No	No	No



#### Features

Italian design fan assisted serve-over counter with refrigerated under-counter storage

- Temperature display
- Stainless steel back shelf
- Ice trays available on request

#### At a Glance

Model	A1LG	A2LG	A3LG
Dimensions (W×D×H) mm	1290×955×970	1890×955×970	2485×955×970
Volume (L)	140	170	227
Electrical Requirements (Watts)	447	667	923
Electrical Requirements (Running Amps)	1.86	2.78	3.85
Display Area	0.83 m <sup>2</sup>	1.25 m <sup>2</sup>	1.65 m <sup>2</sup>
Temperature Range	-1...+7 °C	-1...+7 °C	-1...+7 °C
Cooling Type	Fan	Fan	Fan
Defrost Type	Automatic	Automatic	Automatic
Lighting	No	No	No
Castors	Yes	Yes	Yes
Dual Temperature	No	No	No



## AC Series

### Serve-Over Display Counter

#### At a Glance

Model	A1C	A2C
Dimensions (W×D×H) mm	1280×975×1285	1800×975×1285
Volume (L)	387	580
Electrical Requirements (Watts)	750	1000
Electrical Requirements (Running Amps)	3.13	4.17
Display Area	0.785 m <sup>2</sup>	1.177 m <sup>2</sup>
Temperature Range	0...+5 °C	0...+5 °C
Cooling Type	Fan	Fan
Defrost Type	Automatic	Automatic
Lighting	Yes	Yes
Castors	Yes	Yes
Dual Temperature	No	No



#### Features

Fan assisted serve-over counter with under-counter storage

- Ventilated
- Rear doors



## B Series

### Serve-Over Display Counter

#### At a Glance

Model	B1P	B2P	B3P
Dimensions (W×D×H) mm	1280×1100×1350	1880×1100×1350	2480×1100×1350
Electrical Requirements (Watts)	500	1000	1500
Electrical Requirements (Running Amps)	2.08	4.17	6.25
Display Area	1.02 m <sup>2</sup>	1.53 m <sup>2</sup>	2.04 m <sup>2</sup>
Temperature Range	-1...+5 °C	-1...+5 °C	-1...+5 °C
Cooling Type	Fan	Fan	Fan
Defrost Type	Automatic	Automatic	Automatic
Lighting	Yes	Yes	Yes
Castors	Yes	Yes	Yes
Dual Temperature	No	No	No



#### Features

Italian design fan assisted serve-over counter with refrigerated under-counter storage

- Large stainless steel display deck
- Electromechanical controller
- Curved front glass with hydraulic hinge system



## B Corner

### Serve-Over Corner Display Counter

#### At a Glance

Model	B1C
Dimensions (W×D×H) mm	1970×1070×1345
Electrical Requirements (Watts)	500
Electrical Requirements (Running Amps)	2.08
Display Area	0.84 m <sup>2</sup>
Temperature Range	0...+6 °C
Cooling Type	Fan
Defrost Type	Automatic
Lighting	Yes
Castors	Yes
Dual Temperature	No



#### Features

Italian design fan assisted serve-over corner section

- Curved front glass with hydraulic hinge system
- 90° corner
- Large stainless steel display deck
- Ice trays available on request



## Fish Counter

### Serve-Over Display Counter

#### At a Glance

Model	FC15	FC20	FC30
Dimensions (WxDxH) mm	1540×1140×1170	2020×1140×1170	2980×1140×1170
Electrical Requirements (Watts)	500	1000	2000
Electrical Requirements (Running Amps)	2.08	4.17	8.33
Display Area	1.4 m <sup>2</sup>	1.86 m <sup>2</sup>	2.79 m <sup>2</sup>
Temperature Range	-1...+2 °C	-1...+2 °C	-1...+2 °C
Cooling Type	Static	Static	Static
Defrost Type	Manual	Manual	Manual
Lighting	No	No	No
Castors	No	No	No
Dual Temperature	No	No	No

#### Features

Italian fresh fish serve-over display counter in stylish stainless steel finish

- Temperature display
- Large stainless steel display deck
- Electromechanical controller
- Curved front glass
- On pedestals



## Panarea

### Island Grab 'n' Go Cabinet

#### At a Glance

Model	A1Pano
Dimensions (WxDxH) mm	1300×1120×900
Electrical Requirements (Watts)	450
Electrical Requirements (Running Amps)	1.88
Display Area	1.13 m <sup>2</sup>
Temperature Range	-1...+7 °C
Cooling Type	Fan
Defrost Type	Automatic
Lighting	No
Castors	Yes
Dual Temperature	No

#### Features

Refrigerated island promotional display cabinet suitable for a wide range of display requirements

- Temperature display
- Reach-in cabinet



## E6A

### Dual Temp Wall Site Display Chiller/Freezer

#### At a Glance

Model	E6A
Dimensions (W×D×H) mm	740×778×1120
Volume (L)	160
Electrical Requirements (Watts)	890
Electrical Requirements (Running Amps)	3.71
Temperature Range	-1...+5 °C / -18...-20 °C
Cooling Type	Fan
Defrost Type	Automatic
Lighting	Yes
Castors	Yes
Dual Temperature	Yes

#### Features

Italian wall site chiller/freezer promotional display case

- Glazed to three sides
- Colour: stone / grey
- Illuminated canopy for advertising



## D Series

### Dual Temp Open Top Display Chiller/Freezer

#### At a Glance

Model	D3	D4
Dimensions (W×D×H) mm	1545×1005×1000	2040×1005×1000
Volume (L)	110	152
Electrical Requirements (Watts)	1000	1200
Electrical Requirements (Running Amps)	4.17	5.00
Display Area	1.12 m <sup>2</sup>	1.55 m <sup>2</sup>
Temperature Range	-20...+5 °C	-20...+5 °C
Cooling Type	Fan	Fan
Defrost Type	Automatic	Automatic
Lighting	Yes	Yes
Castors	Yes	Yes
Dual Temperature	Yes	Yes

#### Features

Island display chiller/freezer

- Temperature display
- Bumper bar
- Part glazed sides
- Night covers are available



## K1

### Dual Temp Display Chiller/Freezer

#### At a Glance

Model	K1
Dimensions (W×D×H) mm	595×658×1805
Volume (L)	400
Electrical Requirements (Watts)	1057
Electrical Requirements (Running Amps)	4.40
Temperature Range	-18...+5°C
Cooling Type	Fan
Defrost Type	Automatic
Lighting	Yes
Castors	Yes
Dual Temperature	Yes
Shelves	5

#### Features

Vertical showcase 4 sided display chiller/freezer

- Frost free
- Glazed all four sides
- Adjustable shelves
- Colour: stainless steel and silver aluminium finish



## K1R / K2R

### Dual Temp Display Chiller/Freezer

#### At a Glance

Model	K1R / K2R
Dimensions (W×D×H) mm	600×650×1800
Volume (L)	350
Electrical Requirements (Watts)	500
Electrical Requirements (Running Amps)	2.08
Temperature Range	-18...+5°C
Cooling Type	Fan
Defrost Type	Automatic
Lighting	Yes
Castors	Yes
Dual Temperature	Yes
Shelves	6

#### Features

4 sided display chiller/freezer

- Electronically controlled
- Temperature display
- Glazed all four sides
- Adjustable rotating glass shelves
- Colour: stainless steel and aluminium finish



## K4

## Dual Temp Hexagonal Display Chiller/Freezer

## At a Glance

Model	K4
Dimensions (W×D×H) mm	915×855×1825
Volume (L)	600
Electrical Requirements (Watts)	1000
Electrical Requirements (Running Amps)	4.17
Temperature Range	-18...+5°C
Cooling Type	Fan
Defrost Type	Automatic
Lighting	Yes
Castors	Yes
Dual Temperature	Yes
Shelves	5

## Features

Italian 6 sided chiller/freezer with hinged door

- Shelf dimension: 560mm
- Temperature display
- Glazed all six sides
- Adjustable, removable and rotating glass shelves
- Rotation switch
- Colour: stainless steel and silver aluminium finish



## L1S

## Dual Temp Bakery Display Counter

## At a Glance

Model	L1S
Dimensions (W×D×H) mm	1340×720×1370
Volume (L)	550
Electrical Requirements (Watts)	870
Electrical Requirements (Running Amps)	3.63
Temperature Range	-18...+5°C
Cooling Type	Fan
Defrost Type	Automatic
Lighting	Yes
Castors	Yes
Dual Temperature	Yes
Shelves	2

## Features

Italian double glazed curved glass bakery and patisserie display counter on castors for easy movement

- Anti-mist glass
- Rear sliding doors
- Stainless steel bottom display deck



**L1F****Dual Temp Display Chiller/Freezer****At a Glance**

Model	L1F
Dimensions (W×D×H) mm	1340×720×1370
Electrical Requirements (Watts)	2000
Electrical Requirements (Running Amps)	8.33
Temperature Range	-18...+5 °C
Cooling Type	Fan
Defrost Type	Automatic
Lighting	Yes
Castors	Yes
Dual Temperature	Yes
Shelves	2

**Features**

Italian curved glass chiller/freezer display counter on castors for easy movement

- Double glazed curved front glass
- Stainless steel bottom display deck
- Glass shelves
- Temperature display
- Anti-mist glass
- Rear sliding doors
- Electronically controlled

**Crystal Series****Refrigerated Patisserie Display Case****At a Glance**

Model	L1C/100	L1C/120	L1C/150
Dimensions (W×D×H) mm	1000×750×1430	1200×750×1430	1500×750×1430
Electrical Requirements (Watts)	450	550	600
Electrical Requirements (Running Amps)	1.88	2.29	2.50
Display Area	1.60 m <sup>2</sup>	1.92 m <sup>2</sup>	2.45 m <sup>2</sup>
Temperature Range	+2...+8 °C	+2...+8 °C	+2...+8 °C
Cooling Type	Fan	Fan	Fan
Defrost Type	Automatic	Automatic	Automatic
Lighting	Yes	Yes	Yes
Castors	Yes	Yes	Yes
Dual Temperature	No	No	No
Shelves	3	3	3

**Features**

Stylish curved glass refrigeration patisserie display counter with a stainless steel finish

- Self-closing rear sliding doors
- Adjustable glass shelves
- Glass fronted



## N2C

### Refrigerated Counter Top Display Case

#### At a Glance

Model	N2C
Dimensions (W×D×H) mm	700×560×670
Electrical Requirements (Watts)	220
Electrical Requirements (Running Amps)	1.5
Temperature Range	+2...+8 °C
Cooling Type	Fan
Defrost Type	Automatic
Lighting	Yes
Castors	Yes
Dual Temperature	No
Shelves	2

#### Features

Italian curved glass freezer display counter with castors for easy movement

- Fixed shelves
- Digital controller and temperature display
- Double glazed glass
- Rear sliding doors to display area



## N2K

### Refrigerated Counter Top Display Cabinet

#### At a Glance

Model	N2K
Dimensions (W×D×H) mm	810×428×386
Electrical Requirements (Watts)	164
Electrical Requirements (Running Amps)	1.3
Temperature Range	+2...+12 °C
Cooling Type	Fan
Defrost Type	Automatic
Lighting	Yes
Castors	No
Dual Temperature	No
Shelves	2

#### Features

Compact counter top refrigerated display cabinet with self service style door and stylish illuminated interior

- Adjustable feet
- Digital controller and temperature display



## Meat Dry Ager

### Single and Double Door Dry Aging Units

#### At a Glance

Model	Single Door	Double Door
Dimensions (W×D×H) mm	795×730×2005	1542×730×2005
Volume (L)	550	1150
Electrical Requirements (Watts)	700	900
Electrical Requirements (Running Amps)	2.92	3.75
Temperature Range	+1...+2 °C	+1...+2 °C
Cooling Type	Fan	Fan
Defrost Type	Automatic	Automatic
Lighting	Yes	Yes
Castors	Yes	Yes
Dual Temperature	No	No
Shelves	3	3

#### Features

Dry aging unit with electronic humidity control

- Electronic control panel
- Stainless steel wire shelves with adjustable height
- Rails and hooks available upon request
- Night blind not available



## M Series

### Dome Display Chiller

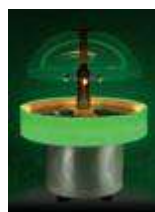
#### At a Glance

Model	M1	M2	M2 LED
Dimensions (dia. × H) mm	dia. 1470×1520	dia. 1110×1350	dia. 1300×1350
Electrical Requirements (Watts)	900	800	1000
Electrical Requirements (Running Amps)	3.75	3.33	4.17
Volume (L)	230	90	90
Display Area	1.8 m <sup>2</sup>	0.9 m <sup>2</sup>	0.9 m <sup>2</sup>
Temperature Range	+2...+10 °C	+2...+10 °C	+2...+10 °C
Cooling Type	Fan	Fan	Fan
Defrost Type	Automatic	Automatic	Automatic
Lighting	No	No	Yes
Castors	No	No	No
Dual Temperature	No	No	No

#### Features

The ultimate refrigeration centre piece for a high impact display from Showmaster

- Temperature display
- Perspex dome with electronic operation for lifting
- Stainless steel perforated display shelves



## M Series

### Wooden Finish Display Chiller

#### At a Glance

Model	M3	M4
Dimensions (dia. x H) mm	dia.1395x1319	dia.1075x1319
Electrical Requirements (Watts)	2000	2000
Electrical Requirements (Running Amps)	8.33	8.33
Temperature Range	-1 ... +10° C	-1 ... +10° C
Display Area	1.3 m <sup>2</sup>	0.8 m <sup>2</sup>
Cooling Type	Fan	Fan
Defrost Type	Automatic	Automatic
Lighting	Yes	Yes
Castors	Yes	Yes
Dual Temperature	No	No

#### Features

The ultimate refrigerated centre piece for a high impact display in wooden finish with cover

- Temperature display
- Stainless steel display deck
- Perspex dome with electronic operation for lifting



## CT Series

### Multi-Deck Display Case

#### At a Glance

Model	C1T	C2T	C3T
Dimensions (WxDxH) mm	1017x870x2070	1330x870x2070	1955x870x2070
Electrical Requirements (Watts)	929	1155	1460
Electrical Requirements (Running Amps)	3.87	4.81	6.08
Display Area	1.40 m <sup>2</sup>	1.90 m <sup>2</sup>	2.90 m <sup>2</sup>
Temperature Range	-1...+5°C	-1...+5°C	-1...+5°C
Cooling Type	Fan	Fan	Fan
Defrost Type	Automatic	Automatic	Automatic
Lighting	Yes	Yes	Yes
Castors	Yes	Yes	Yes
Dual Temperature	No	No	No
Shelves	4	4	4

#### Features

Attractive multi-deck display cabinet with adjustable shelves

- Panoramic end walls
- Manual night blind
- Electronically controlled
- Digital temperature display



## CLT Series

### Multi-Deck Display Case

#### At a Glance

Model	C1LT	C2LT	C3LT
Dimensions (W×D×H) mm	1017×860×1700	1330×860×1700	1955×860×1700
Electrical Requirements (Watts)	816	929	1155
Electrical Requirements (Running Amps)	3.40	3.87	4.81
Display Area	1.71 m <sup>2</sup>	2.28 m <sup>2</sup>	3.41 m <sup>2</sup>
Temperature Range	-1...+7°C	-1...+7°C	-1...+7°C
Cooling Type	Fan	Fan	Fan
Defrost Type	Automatic	Automatic	Automatic
Lighting	Yes	Yes	Yes
Castors	Yes	Yes	Yes
Dual Temperature	No	No	No
Shelves	3	3	3



#### Features

Italian style low height promotional multi-deck display cabinet

- Night blind
- Ticket strips and risers available upon request



## C2R

### Multi-Deck Display Case

#### At a Glance

Model	C2R
Dimensions (W×D×H) mm	1200×655×2000
Electrical Requirements (Watts)	2500
Electrical Requirements (Running Amps)	10.42
Display Area	2.07 m <sup>2</sup>
Temperature Range	-1...+7°C
Cooling Type	Fan
Defrost Type	Automatic
Lighting	Yes
Castors	Yes
Dual Temperature	No
Shelves	5



#### Features

Stainless steel multi-deck display case with fully glazed end panels and two hinged rear doors

- Electronically controlled
- Digital temperature display
- Night blind
- Adjustable (height and angle) shelves and base
- Ticket strips on shelves
- Perspex shelf risers



## C2-SD Series

### Multi-Deck Display Case

#### At a Glance

Model	C2-SD60/120	C2-SD75/120	C2-SD75/125
Dimensions (W×D×H) mm	1200×600×2000	1200×750×2000	1250×750×1980
Electrical Requirements (Watts)	2500	2500	2500
Electrical Requirements (Running Amps)	10.42	10.42	10.42
Temperature Range	-1...+7 °C	-1...+7 °C	-1...+7 °C
Display Area	2.07 m <sup>2</sup>	2.81 m <sup>2</sup>	2.92 m <sup>2</sup>
Cooling Type	Fan	Fan	Fan
Defrost Type	Automatic	Automatic	Automatic
Lighting	Yes	Yes	Yes
Castors	Yes	Yes	Yes
Dual Temperature	No	No	No
Shelves	4*	4*	4*



#### Features

Stainless steel multi-deck display case with fully glazed end panels

- Electronically controlled
- Digital temperature display
- Night blind
- Adjustable (height and angle) shelves and base
- Ticket strips on shelves
- Perspex shelf risers

\*Unit provided with 4 shelves only



## G1S

### Dual Temp Glass Door Chiller/Freezer

#### At a Glance

Model	G1S
Dimensions (W×D×H) mm	670×760×1930
Volume (L)	400
Electrical Requirements (Watts)	500
Electrical Requirements (Running Amps)	2.08
Temperature Range	-25...+5 °C
Cooling Type	Fan
Defrost Type	Automatic
Lighting	Yes
Castors	Yes
Dual Temperature	Yes
Shelves	5

#### Features

Upright single glass door chiller/freezer with hinged door and lockable castors for easy movement

- Long handle
- Adjustable shelves



**G4****Glass Door Chiller****At a Glance**

Model	G4
Dimensions (W×D×H) mm	600×635×1950
Volume (L)	380
Electrical Requirements (Watts)	750
Electrical Requirements (Running Amps)	3.13
Temperature Range	0...+10° C
Cooling Type	Fan
Defrost Type	Automatic
Lighting	Yes
Castors	Yes
Dual Temperature	No
Shelves	5

**Features**

Upright single glass door chiller with hinged door and lockable castors for easy movement

- Self-closing door
- Food safe plastic interior
- Plastic coated shelves
- Integrated grab handle

**G7, G7XXL****Dual Temp Double Glass Door Chiller/Freezer****At a Glance**

Model	G7	G7XXL
Dimensions (W×D×H) mm	1320×760×1930	1320×890×1930
Volume (L)	1007	1270
Electrical Requirements (Watts)	1000	1400
Electrical Requirements (Running Amps)	4.17	5.83
Temperature Range	-25...+5° C	-25...+5° C
Cooling Type	Fan	Fan
Defrost Type	Automatic	Automatic
Lighting	Yes	Yes
Castors	Yes	Yes
Dual Temperature	Yes	Yes
Shelves	5	5

**Features**

Upright double glass door chiller/freezer with hinged door and lockable castors for easy movement

- Self-closing heated door
- Robust construction
- Food safe plastic interior



## G8S

### Dual Temp Triple Glass Door Chiller/Freezer

#### At a Glance

Model	G8S
Dimensions (W×D×H) mm	1970×760×1950
Volume (L)	1880
Electrical Requirements (Watts)	1500
Electrical Requirements (Running Amps)	6.52
Temperature Range	-25...+5 °C
Cooling Type	Fan
Defrost Type	Automatic
Lighting	Yes
Castors	Yes
Dual Temperature	Yes
Shelves	5

#### Features

Upright triple glass door chiller/freezer with hinged doors and lockable castors for easy movement

- Electronic control
- Robust construction
- Food safe plastic interior



## G4WS

### Wine Display Chiller

#### At a Glance

Model	G4WS
Dimensions (W×D×H) mm	590×560×1460
Electrical Requirements (Watts)	1000
Electrical Requirements (Running Amps)	4.17
Temperature Range	+5...+18 °C
Cooling Type	Fan
Defrost Type	Automatic
Lighting	Yes
Castors	No
Dual Temperature	No
Shelves	14

#### Features

Attractive black wine display chiller cabinet with two independently controlled compartments

- Double glazed display door
- 14 wooden shelves (7 in upper compartment and 7 + 1 half shelf in bottom compartment)
- Integrated grab handle
- Reversible door
- Capacity: 154×75cl bottles



**H3R****Back Bar Chiller****At a Glance**

Model	H3R
Dimensions (W×D×H) mm	600×500×900
Volume (L)	140
Electrical Requirements (Watts)	500
Electrical Requirements (Running Amps)	2.08
Temperature Range	+2...+7 °C
Cooling Type	Fan
Defrost Type	Manual
Lighting	Yes
Castors	No
Dual Temperature	No
Shelves	2

**Features****Single door under counter back bar chiller**

- Self-closing door
- Hammered aluminium interior
- Adjustable shelves
- Metal door frame with metal door handle
- Colour: Black
- Capacity: 104×330ml bottles

**H3DD****Double Door Back Bar Chiller****At a Glance**

Model	H3DD
Dimensions (W×D×H) mm	900×510×885
Volume (L)	705
Electrical Requirements (Watts)	1000
Electrical Requirements (Running Amps)	4.17
Temperature Range	+2...+7 °C
Cooling Type	Fan
Defrost Type	Off Cycle
Lighting	Yes
Castors	No
Dual Temperature	No
Shelves	2

**Features****Double door under counter back bar chiller**

- Self-closing door
- Adjustable shelves
- Adjustable feet at front and rollers at rear
- Sliding or hinged door (according to availability)



## H3W

### Half Height Wine Display Chiller

#### At a Glance

Model	H3W
Dimensions (W×D×H) mm	600×610×860
Volume (L)	125
Electrical Requirements (Watts)	500
Electrical Requirements (Running Amps)	2.08
Temperature Range	+4...+12 °C
Cooling Type	Fan
Defrost Type	Automatic
Lighting	Yes
Castors	No
Dual Temperature	No
Shelves	2

#### Features

Attractive half height black wine display chiller cabinet

- Adjustable shelves
- Double glazed door
- Low energy consumption
- Capacity: 50×75cl bottles



## H4

### Table Top Wine Display Chiller

#### At a Glance

Model	H4
Dimensions (W×D×H) mm	430×460×503
Volume (L)	17
Electrical Requirements (Watts)	150
Electrical Requirements (Running Amps)	0.43
Temperature Range	+4...+16 °C
Cooling Type	Static
Defrost Type	Manual
Lighting	Yes
Castors	No
Dual Temperature	No
Shelves	2

#### Features

Specialised wine unit for red wine, white wine, sparkling and champagne

- Low noise level
- Capacity: 17×75cl bottles



**H3N****Back Bar Chiller****At a Glance**

Model	H3N
Dimensions (W×D×H) mm	500×580×772
Volume (L)	95
Electrical Requirements (Watts)	500
Electrical Requirements (Running Amps)	2.08
Temperature Range	+2...+7 ° C
Cooling Type	Static
Defrost Type	Off Cycle
Lighting	Yes
Castors	No
Dual Temperature	No
Shelves	3

**Features**

Single door under counter back bar chiller

- Self-closing door
- Adjustable shelves
- Capacity: 104×330ml bottles
- Colour: white

**N3W****Table Top Wine Display Chiller****At a Glance**

Model	N3W
Dimensions (W×D×H) mm	800×190×332
Volume (L)	13
Electrical Requirements (Watts)	80
Electrical Requirements (Running Amps)	0.33
Temperature Range	+4...+16 ° C
Cooling Type	Fan
Defrost Type	Off Cycle
Lighting	No
Castors	No
Dual Temperature	No
Shelves	2

**Features**

Specialised wine unit with anti-drip shelves

- Low noise level
- Capacity: 6×75cl bottles



## H3WT

### Half Height Wine Display Chiller

#### At a Glance

Model	H3WT
Dimensions (W×D×H) mm	595×570×820
Volume (L)	141
Electrical Requirements (Watts)	160
Electrical Requirements (Running Amps)	0.67
Temperature Range	+5...+18°C
Cooling Type	Fan
Defrost Type	Automatic
Lighting	Yes
Castors	No
Dual Temperature	No
Shelves	3



#### Features

Single door, under counter wine chiller suitable for red or white wine

- Adjustable shelves
- Adjustable feet
- Digital controller and temperature display
- Tinted glass door to protect wine from UV rays
- Charcoal filter to help remove odours and protect wine
- Capacity: 42×75cl bottles
- Stainless steel door frame
- Slide out wooden shelves



## G4WT

### Black Glass Door Wine Chiller

#### At a Glance

Model	G4WT
Dimensions (W×D×H) mm	595×680×1760
Volume (L)	370
Electrical Requirements (Watts)	220
Electrical Requirements (Running Amps)	0.92
Temperature Range	+5...+12 and +12...+18°C
Cooling Type	Fan
Defrost Type	Automatic
Lighting	Yes
Castors	No
Dual Temperature	No
Shelves	13



#### Features

Single door wine display chiller cabinet, specially designed with two separate refrigerated sections to store red and white wine at the correct temperature

- Lockable door
- Adjustable shelves
- Adjustable feet
- Digital controller and temperature display
- Tinted glass door to protect wine from UV rays
- Charcoal filter to help remove odours and protect wine
- Capacity: 154×75cl bottles (77 bottles in each refrigerated section)



## E Series

### Wall Site Combi Chiller/Freezer



E7 larp



E7 larp Side



E7 Isabel



E7 Isabel Side

### At a Glance

Model	E7 larp	E7 Isabel
Dimensions (W×D×H) mm	1995×900×2035	2020×890×2040
Volume (L)	670 + 719	470 + 745
Power Supply (Amps)	20	13
Temperature Range	-18...-20° C / +2...+4° C	-18...-20° C / 0...+2 ° C
Cooling Type	Fan	Fan
Defrost Type	Automatic	Automatic
Lighting	Yes	Yes
Castors	Yes	Yes
Dual Temperature	Yes	Yes
Shelves	6	6

### Features

Wall site combi freezer with glass hinged doors

- Self-closing heated doors
- 2 shelves per door section
- Adjustable shelves
- Reach-in freezer with glass sliding lids (larp model only)
- Top half glass door can be set to chiller or freezer
- Bottom wells can be set to chiller or freezer





# Storage Chillers

## H Series

### White Storage Chiller and Freezer

#### At a Glance

Model	H1 Chiller	H2 Freezer	H1A Chiller
Dimensions (WxDxH) mm	545x570x845	500x545x840	550x580x850
Volume (L)	130	130	110*
Electrical Requirements (Watts)	250	250	250
Electrical Requirements (Running Amps)	1.04	1.04	1.04
Temperature Range	+2...+10 °C	-18...-22 °C	+2...+10 °C / -18...-22 °C*
Cooling Type	Static	Static	Static
Defrost Type	Off Cycle	Manual	Manual
Lighting	Yes	Yes	Yes
Castors	No	No	No
Dual Temperature	No	No	No
Shelves	3	3	2



#### Features

Energy efficient and static cooling storage chiller/freezer with hinged door and recessed door handle

##### H1 Chiller

- Salad crisper box
- 3 bottle / can balconies
- Glass or wired shelves

##### H2 Freezer

- 4 drawers
- Wired shelves

##### H1A Chiller

- Freezer compartment
- Glass shelves

\*14L Freezer Compartment / 96L Fridge



## H5

### Static Storage Chiller and Freezer

#### At a Glance

Model	H5C Chiller	H5F Freezer
Dimensions (WxDxH) mm	545x590x1412	555x540x1435
Volume (L)	220	220
Electrical Requirements (Watts)	500	500
Electrical Requirements (Running Amps)	2.08	2.08
Temperature Range	+1...+10 °C	-18...-22 °C
Cooling Type	Static	Static
Defrost Type	Off Cycle	Manual
Lighting	Yes	Yes
Castors	No	No
Dual Temperature	No	No
Shelves	4	4
Drawer	1	1
Door Pockets	4	4

#### Features

Low height static storage chiller and freezer

- A-rated energy model
- Reversible door for added versatility



**G5/600****Static Storage Chiller****At a Glance**

Model	G5/600
Dimensions (W×D×H) mm	778×696×1895
Volume (L)	620
Electrical Requirements (Watts)	130
Electrical Requirements (Running Amps)	0.54
Temperature Range	0...+8 °C
Cooling Type	Fan
Defrost Type	Off Cycle
Lighting	Yes
Castors	No
Dual Temperature	No
Shelves	3 + 1/2

**Features**

Robust static storage chiller

- A-rated energy model
- Reversible door for added versatility
- Adjustable shelves

**G3****Solid Door Fridge/Freezer****At a Glance**

Model	G3
Dimensions (W×D×H) mm	540×570×1720
Electrical Requirements (Watts)	750
Electrical Requirements (Running Amps)	3.13
Temperature Range	+1...+10 °C / -18...-22 °C
Cooling Type	Fan
Defrost Type	Automatic
Lighting	Yes
Castors	No
Dual Temperature	No
Fridge Shelves	3
Fridge Drawer	1
Fridge Door Pockets	3
Freezer Drawers	3

**Features**

Upright storage fridge/freezer with two solid hinged doors

- Frost free
- Reversible doors
- High temperature warning system
- Adjustable door storage
- Colour: white



## GN1

## Dual Temp Chiller/Freezer

## At a Glance

Model	GN1
Dimensions (W×D×H) mm	730×810×2050
Volume (L)	580
Electrical Requirements (Watts)	645
Electrical Requirements (Running Amps)	2.69
Temperature Range	-18...+5°C
Cooling Type	Fan
Defrost Type	Automatic
Lighting	Yes
Castors	No
Dual Temperature	Yes
Shelves	4

## Features

## Stainless steel chiller/freezer

- Shelves on GN tracks
- GN tray compatible\*



## GN2, GN3

## Bench Chiller

## At a Glance

Model	GN2	GN3
Dimensions (W×D×H) mm	1360×700×860	1778×700×860
Volume (L)	275	428
Electrical Requirements (Watts)	270	330
Electrical Requirements (Running Amps)	1.13	1.38
Temperature Range	-2...+8°C	-2...+8°C
Cooling Type	Fan	Fan
Defrost Type	Automatic	Automatic
Lighting	No	No
Castors	Yes	Yes
Dual Temperature	No	No
Shelves	1	1

## Features

## Stainless steel refrigerated storage bench chiller with working surface

- Automatic condensate evaporation
- Ventilated
- Stainless steel interior/exterior
- Interior rounded corner
- 1 shelf per door, GN tray compatible\*



\*Please see diagram for GN tray sizes on p. 85

## Beer Dump

### Sliding Top Bottle Cooler

#### At a Glance

Model	Beer Dump 1.1	Beer Dump 1.5
Dimensions (W×D×H) mm	1100×600×830	1410×600×820
Volume (L)	1400	1600
Electrical Requirements (Watts)	150	150
Electrical Requirements (Running Amps)	0.63	0.63
Temperature Range	0...+8 °C	0...+8 °C
Cooling Type	Static	Static
Defrost Type	Manual	Manual
Lighting	Yes	Yes
Castors	No	No
Dual Temperature	No	No



#### Features

Specialist refrigerated storage unit

- Sliding top for easy access
- High storage capacity



## Blast Chiller/Freezer

### Dual Temp Blast Storage Chiller/Freezer

#### At a Glance

Model	Blast
Dimensions (W×D×H) mm	810×820×1660
Electrical Requirements (Watts)	925
Electrical Requirements (Running Amps)	4.25
Volume (L)	204
Temperature Range	-18...-20 °C / 0...+4 °C
Cooling Type	Fan
Defrost Type	Automatic
Lighting	Yes
Castors	No
Dual Temperature	Yes

#### Features

Dual temperature blast and storage chiller/freezer with digital controller and adjustable feet

- Drip tray must be manually emptied or plumbed into permanent drain
- Digital controller and temperature display
- Temperature probe
- 4 pre-settable programs
- Internal rounded corners for easy cleaning
- Shelf racks removable for easy cleaning
- Simple access to fans for cleaning
- Accepts 1/1 Gastronorm pans (not supplied)\*
- Chill capacity +70 °C to +3 °C 20 kg in 90 mins
- Freeze +70 °C to -18 °C 12kg in 240 mins
- Accepts up to 5 GN 1/1 size trays/pan in blast mode and up to 10 1/1 GN trays/pans as storage unit





# Display Freezers

## E1NL, E1.7NL, E2NL

### High Vision Display Freezer

#### At a Glance

Model	E1NL	E1.7NL	E2NL
Dimensions (WxDxH) mm	1540×910×1000	1740×910×1000	2250×875×1015
Volume (L)	556	650	810
Electrical Requirements (Watts)	460	460	700
Electrical Requirements (Running Amps)	3	3	6
Temperature Range	-18...-23°C	-18...-23°C	-18...-23°C
Cooling Type	Static	Static	Static
Defrost Type	Manual	Manual	Manual
Lighting	Yes	Yes	Yes
Castors	Yes	Yes	Yes
Dual Temperature	No	No	No

#### Features

High vision wall site display freezer with hinged lid for back to back or side to side positioning

- Display grids available upon request
- Mains indicator light
- Defrost indicator light
- Temperature warning light
- Colour: grey or white
- E1NL can vary in colour and lid options



## E1NS, E2NS

### High Vision Display Freezer

#### At a Glance

Model	E1NS	E2NS
Dimensions (WxDxH) mm	1555×850×975	2250×850×1020
Volume (L)	556	810
Electrical Requirements (Watts)	460	460
Electrical Requirements (Running Amps)	3	3
Temperature Range	-18...-23°C	-18...-23°C
Cooling Type	Static	Static
Defrost Type	Manual	Manual
Lighting	Yes	Yes
Castors	Yes	Yes
Dual Temperature	No	No

#### Features

High vision wall site display freezer with sliding lids for back to back or side to side positioning

- Display grids available upon request
- Mains indicator light
- Defrost indicator light
- Temperature warning light
- Colour: grey or white
- E1NS can vary in colour and lid options



**D1****Island Site Freezer****At a Glance**

Model	D1
Dimensions (W×D×H) mm	1552×967×791
Volume (L)	595
Electrical Requirements (Watts)	180
Electrical Requirements (Running Amps)	1.12
Temperature Range	-25... -19°C
Cooling Type	Static
Defrost Type	Manual
Lighting	No
Castors	No
Dual Temperature	No

**Features**

High vision display freezer with sliding lids for back to back or side to side positioning

- Adjustable feet
- Temperature display
- Defrost drain
- Fan-assisted condenser
- Bumper bars

**D1C****Sliding Glass Display Freezer****At a Glance**

Model	D1C
Dimensions (W×D×H) mm	1473×760×865
Volume (L)	500
Electrical Requirements (Watts)	430
Electrical Requirements (Running Amps)	1.79
Temperature Range	-25... -19°C
Cooling Type	Static
Defrost Type	Manual
Lighting	Yes
Castors	Yes
Dual Temperature	No

**Features**

Sliding glass lid wall site display freezer on castors for easy movement

- Temperature read-out
- 5 baskets available upon request



## D Series

### Dual Temp Open Top Display Chiller/Freezer

#### At a Glance

Model	D3	D4
Dimensions (WxDxH) mm	1545×1005×1000	2040×1005×1000
Volume (L)	110	152
Electrical Requirements (Watts)	1000	1200
Electrical Requirements (Running Amps)	4.17	5.00
Display Area	1.12 m <sup>2</sup>	1.55 m <sup>2</sup>
Temperature Range	-20...+5°C	-20...+5°C
Cooling Type	Fan	Fan
Defrost Type	Automatic	Automatic
Lighting	Yes	Yes
Castors	Yes	Yes
Dual Temperature	Yes	Yes



#### Features

Island display freezer/chiller on castors for easy movement

- Temperature display
- Bumper bar
- Part glazed sides
- Night covers are available



## E6A

### Dual Temp Wall Site Display Freezer/Chiller

#### At a Glance

Model	E6A
Dimensions (WxDxH) mm	740×778×1120
Volume (L)	160
Electrical Requirements (Watts)	890
Electrical Requirements (Running Amps)	3.71
Temperature Range	-1...+5°C / -18...-20°C
Cooling Type	Fan
Defrost Type	Automatic
Lighting	Yes
Castors	Yes
Dual Temperature	Yes

#### Features

Italian wall site chiller/freezer promotional display case

- Glazed to three sides
- Colour: stone / grey
- Illuminated canopy for advertising



**L1S****Dual Temp Bakery Display Counter****At a Glance**

Model	L1S
Dimensions (W×D×H) mm	1340×720×1370
Volume (L)	550
Electrical Requirements (Watts)	870
Electrical Requirements (Running Amps)	3.63
Temperature Range	-18...+5°C
Cooling Type	Fan
Defrost Type	Automatic
Lighting	Yes
Castors	Yes
Dual Temperature	Yes
Shelves	2

**Features**

Italian double glazed curved glass bakery and patisserie display counter on castors for easy movement

- Anti-mist glass
- Rear sliding doors
- Stainless steel bottom display deck

**L1F****Dual Temp Display Freezer/Chiller****At a Glance**

Model	L1F
Dimensions (W×D×H) mm	1340×720×1370
Electrical Requirements (Watts)	2000
Electrical Requirements (Running Amps)	8.33
Temperature Range	-18...+5°C
Cooling Type	Fan
Defrost Type	Automatic
Lighting	Yes
Castors	Yes
Dual Temperature	Yes
Shelves	2

**Features**

Italian curved glass freezer display counter on castors for easy movement

- Double glazed curved front glass
- Stainless steel bottom display deck
- Glass shelves
- Temperature display
- Anti-mist glass
- Rear sliding doors
- Electronically controlled



## K1

### Dual Temp Display Freezer/Chiller

#### At a Glance

Model	K1
Dimensions (W×D×H) mm	595×658×1805
Volume (L)	400
Electrical Requirements (Watts)	1057
Electrical Requirements (Running Amps)	4.40
Temperature Range	-18...+5°C
Cooling Type	Fan
Defrost Type	Manual
Lighting	Yes
Castors	Yes
Dual Temperature	Yes
Shelves	5

#### Features

Vertical showcase 4 sided display freezer/chiller

- Frost free
- Glazed all four sides
- Adjustable shelves
- Colour: stainless steel and silver aluminium finish



## K1R/K2R

### Dual Temp Display Freezer/Chiller

#### At a Glance

Model	K1R/K2R
Dimensions (W×D×H) mm	600×650×1800
Volume (L)	350
Electrical Requirements (Watts)	500
Electrical Requirements (Running Amps)	2.08
Temperature Range	-18...+5°C
Cooling Type	Fan
Defrost Type	Automatic
Lighting	Yes
Castors	Yes
Dual Temperature	Yes
Shelves	5

#### Features

4 sided display chiller/freezer

- Electronically controlled
- Temperature display
- Glazed all four sides
- Adjustable rotating glass shelves
- Colour: stainless steel and aluminium finish



## K4

## Dual Temp Hexagonal Display Chiller/Freezer

## At a Glance

Model	K4
Dimensions (W×D×H) mm	915×855×1825
Volume (L)	600
Electrical Requirements (Watts)	1000
Electrical Requirements (Running Amps)	4.17
Temperature Range	-18...+5°C
Cooling Type	Fan
Defrost Type	Automatic
Lighting	Yes
Castors	Yes
Dual Temperature	Yes
Shelves	5

## Features

Italian 6 sided chiller freezer with hinged door

- Temperature display
- Glazed all six sides
- Adjustable, removable and rotating glass shelves
- Rotation switch
- Colour: stainless steel and silver aluminium finish
- Shelf dimension: 560mm



## G1

## Glass Door Freezer

## At a Glance

Model	G1
Dimensions (W×D×H) mm	595×640×1840
Volume (L)	300
Electrical Requirements (Watts)	570
Electrical Requirements (Running Amps)	3.9
Temperature Range	-18...-22°C
Cooling Type	Static
Defrost Type	Manual
Lighting	Yes
Castors	No
Dual Temperature	No
Shelves	6

## Features

Upright single glass door display freezer with hinged door

- Anti-mist door
- Food safe plastic interior
- Fixed shelves
- Integrated grab handle



**G1S****Dual Temp Glass Door Freezer/Chiller****At a Glance**

Model	G1S
Dimensions (W×D×H) mm	670×760×1930
Volume (L)	400
Electrical Requirements (Watts)	500
Electrical Requirements (Running Amps)	2.08
Temperature Range	-25...+5 °C
Cooling Type	Fan
Defrost Type	Automatic
Lighting	Yes
Castors	Yes
Dual Temperature	Yes
Shelves	5

**Features**

Upright single glass door freezer/chiller with hinged door and lockable castors for easy movement

- Long handle
- Adjustable shelves

**G7, G7XXL****Dual Temp Double Glass Door Freezer/Chiller****At a Glance**

Model	G7	G7XXL
Dimensions (W×D×H) mm	1320×760×1930	1320×890×1950
Volume (L)	1007	1270
Electrical Requirements (Watts)	1000	1400
Electrical Requirements (Running Amps)	4.17	5.83
Temperature Range	-25...+5 °C	-25...+5 °C
Cooling Type	Fan	Fan
Defrost Type	Automatic	Automatic
Lighting	Yes	Yes
Castors	Yes	Yes
Dual Temperature	Yes	Yes
Shelves	5	5

**Features**

Upright double glass door freezer/chiller with hinged door and lockable castors for easy movement

- Self-closing heated door
- Robust construction
- Food safe plastic interior



**G8S****Dual Temp Triple Glass Door Freezer/Chiller****At a Glance**

Model	G8S
Dimensions (W×D×H) mm	1970×760×1950
Volume (L)	1880
Electrical Requirements (Watts)	1500
Electrical Requirements (Running Amps)	6.52
Temperature Range	-25...+5 °C
Cooling Type	Fan
Defrost Type	Automatic
Lighting	Yes
Castors	Yes
Dual Temperature	Yes
Shelves	5

**Features**

Upright triple glass door freezer/chiller with hinged doors and lockable castors for easy movement

- Electronic control
- Robust construction
- Food safe plastic interior

**E5****Ice Cream Display Freezer****At a Glance**

Model	E5
Dimensions (W×D×H) mm	1335×665×1170
Volume (L)	121
Electrical Requirements (Watts)	750
Electrical Requirements (Running Amps)	3.13
Temperature Range	-15...-20 °C
Cooling Type	Static
Defrost Type	Electric
Lighting	Yes
Castors	No
Dual Temperature	No

**Features**

Ice cream display scoop freezer

- Display for 7 × 5 litre Napoli pans
- Digital temperature display
- Flat front glass



N2

Counter Top Display Freezer

At a Glance

Model	N2
Dimensions (W×D×H) mm	528×570×530
Volume (L)	60
Electrical Requirements (Watts)	500
Electrical Requirements (Running Amps)	2.08
Temperature Range	-18...-22 °C
Cooling Type	Static
Defrost Type	Manual
Lighting	Yes
Castors	No
Dual Temperature	No
Shelves	2

Features

Counter top display freezer

- Adjustable shelves
- Double glazed door with heating to prevent misting



## E Series

### Wall Site Combi Freezer/Chiller



E7 larp



E7 larp Side



E7 Isabel



E7 Isabel Side

### At a Glance

Model	E7 larp	E7 Isabel
Dimensions (W×D×H) mm	1995×900×2035	2020×890×2040
Volume (L)	670 + 719	470 + 745
Power Supply (Amps)	20	13
Temperature Range	-18...-20 °C / +2...+4 °C	-18...-20 °C / 0...+2 °C
Cooling Type	Fan	Fan
Defrost Type	Automatic	Automatic
Lighting	Yes	Yes
Castors	Yes	Yes
Dual Temperature	Yes	Yes
Shelves	6	6

### Features

Wall site combi freezer with hinged glass doors

- Self-closing heated doors
- 2 shelves per door section
- Adjustable shelves
- Reach-in freezer with glass sliding lids (larp model only)
- Top half glass door can be set to chiller or freezer
- Bottom wells can be set to chiller or freezer





# Storage Freezers

## H Series

### White Storage Chiller and Freezer

#### At a Glance

Model	H1 Chiller	H2 Freezer	H1A Chiller
Dimensions (W×D×H) mm	545×570×845	500×545×840	550×580×850
Volume (L)	130	130	110*
Electrical Requirements (Watts)	250	250	250
Electrical Requirements (Running Amps)	1.04	1.04	1.04
Temperature Range	+2...+10°C	-18...-22°C	+2...+10°C / -18...-22°C*
Cooling Type	Static	Static	Static
Defrost Type	Off Cycle	Manual	Manual
Lighting	Yes	Yes	Yes
Castors	No	No	No
Dual Temperature	No	No	No
Shelves	3	3	2



#### Features

Energy efficient and static cooling storage chiller/freezer with hinged door and recessed door handle

##### H1 Chiller

- Salad crisper box
- 3 bottle / can balconies
- Glass or wired shelves

##### H2 Freezer

- 4 drawers
- Wired shelves

##### H1A Chiller

- Freezer compartment
- Glass shelves

\*14L Freezer Compartment / 96L Fridge



## H5

### Static Storage Chiller and Freezer

#### At a Glance

Model	H5F Freezer	H5C Chiller
Dimensions (W×D×H) mm	555×540×1435	545×590×1412
Volume (L)	220	220
Electrical Requirements (Watts)	500	500
Electrical Requirements (Running Amps)	2.08	2.08
Temperature Range	-18...-22°C	+1...+10°C
Cooling Type	Static	Static
Defrost Type	Manual	Off Cycle
Lighting	Yes	Yes
Castors	No	No
Dual Temperature	No	No
Shelves	4	4
Drawer	1	1
Door Pockets	4	4

#### Features

Low height static storage chiller and freezer

- A-rated energy model
- Reversible door for added versatility
- 1 drawer
- 4 door pockets



## GN1

## Dual Temp Freezer/Chiller

## At a Glance

Model	GN1
Dimensions (W×D×H) mm	730×810×2050
Volume (L)	580
Electrical Requirements (Watts)	645
Electrical Requirements (Running Amps)	2.69
Temperature Range	-18...+5°C
Cooling Type	Fan
Defrost Type	Automatic
Lighting	Yes
Castors	No
Dual Temperature	Yes
Shelves	4

## Features

Stainless steel freezer/chiller

- Shelves on GN tracks
- GN tray compatible\*



## G2

## Solid Door Storage Freezer

## At a Glance

Model	G2
Dimensions (W×D×H) mm	777×695×1887
Volume (L)	580
Electrical Requirements (Watts)	750
Electrical Requirements (Running Amps)	3.13
Temperature Range	-18...-25°C
Cooling Type	Static
Defrost Type	Manual
Lighting	No
Castors	No
Dual Temperature	No
Shelves	6

## Features

Upright storage freezer with hinged solid door

- Temperature display
- Self-closing door
- Food safe plastic interior
- Fixed shelves



## G3

## Solid Door Fridge/Freezer

## At a Glance

Model	G3
Dimensions (W×D×H) mm	540×570×1720
Electrical Requirements (Watts)	750
Electrical Requirements (Running Amps)	3.13
Temperature Range	-18...-22 °C / +1...+10 °C
Cooling Type	Fan
Defrost Type	Automatic
Lighting	Yes
Castors	No
Dual Temperature	No
Fridge Shelves	3
Fridge Drawer	1
Fridge Door Pockets	3
Freezer Drawers	3

## Features

Upright storage fridge/ freezer with two solid hinged doors

- Frost free
- Reversible doors
- High temperature warning system
- Adjustable door storage
- Colour: white



## GN3DBF

## Bench Freezer

## At a Glance

Model	GN3DBF
Dimensions (W×D×H) mm	1795×700×850
Volume (L)	416
Electrical Requirements (Watts)	570
Electrical Requirements (Running Amps)	3.9
Temperature Range	-18...-22 °C
Cooling Type	Fan
Defrost Type	Automatic
Lighting	No
Castors	Yes
Dual Temperature	No



## Features

Stainless steel refrigerated storage bench freezer with working surface

- Self closing doors
- Rounded interior corners
- Heavy duty full length door handle
- Stainless steel
- Adjustable and removable shelves
- 1 shelf per door, GN tray compatible\*



## F Series

### Chest Freezer

#### At a Glance

Model	F1	F2	F3
Dimensions (W×D×H) mm	625×585×890	1298×718×830	1555×720×840
Volume (L)	190	400	490
Electrical Requirements (Watts)	172	320	290
Electrical Requirements (Running Amps)	0.72	1.05	1.39
Temperature Range	-18...-25 °C	-18...-25 °C	-18...-25 °C
Cooling Type	Static	Static	Static
Defrost Type	Manual	Manual	Manual
Lighting	No	No	No
Castors	No	No	No
Dual Temperature	No	No	No

#### Features

Hinged solid lid storage white chest freezer with temperature display

- Temperature warning light
- Built-in skin condenser
- Inner liner of hammered aluminium
- Quick freezing switch
- Steel sheet body
- Grab lid handle
- Quick freezing light



## F1S

### Chest Freezer

#### At a Glance

Model	F1S
Dimensions (W×D×H) mm	570×550×845
Volume (L)	103
Electrical Requirements (Watts)	172
Electrical Requirements (Running Amps)	0.72
Temperature Range	-18...-21 °C
Cooling Type	Static
Defrost Type	Manual
Lighting	No
Castors	No
Dual Temperature	No

#### Features

Hinged lid chest freezer in white

- Indicator lights
- Counter balanced lid
- 1 wire freezer basket
- Adjustable feet



## F1 SS

## Chest Freezer

## At a Glance

Model	F1 SS
Dimensions (W×D×H) mm	734×700×945
Volume (L)	189
Electrical Requirements (Watts)	150
Electrical Requirements (Running Amps)	0.68
Temperature Range	-24...-14°C
Cooling Type	Static
Defrost Type	Manual
Lighting	No
Castors	Yes
Dual Temperature	No
Baskets	1

## Features

Hinged solid lid chest freezer in white on strong castors for easy movement

- Stainless steel lid
- Handle with lock
- Thermometer
- Powder coated white inner liner
- Defrost water drain



## F2 SS

## Chest Freezer

## At a Glance

Model	F2 SS
Dimensions (W×D×H) mm	1284×700×945
Volume (L)	385
Electrical Requirements (Watts)	230
Electrical Requirements (Running Amps)	1.05
Temperature Range	-24...-14°C
Cooling Type	Static
Defrost Type	Manual
Lighting	No
Castors	Yes
Dual Temperature	No
Baskets	2

## Features

Hinged solid lid chest freezer in white on strong castors for easy movement

- Stainless steel lid
- Handle with lock
- Thermometer
- Powder coated white inner liner
- Defrost water drain



**F3 SS****Chest Freezer****At a Glance**

Model	F3 SS
Dimensions (W×D×H) mm	1504×700×945
Volume (L)	463
Electrical Requirements (Watts)	230
Electrical Requirements (Running Amps)	1.05
Temperature Range	-24...-14°C
Cooling Type	Static
Defrost Type	Manual
Lighting	No
Castors	Yes
Dual Temperature	No
Baskets	2

**Features**

Hinged solid lid chest freezer in white on strong castors for easy movement

- Stainless steel lid
- Handle with lock
- Thermometer
- Powder coated white inner liner
- Defrost water drain

**Blast Freezer/Chiller****Dual Temp Blast Storage Freezer/Chiller****At a Glance**

Model	Blast
Dimensions (W×D×H) mm	810×820×1660
Electrical Requirements (Watts)	925
Electrical Requirements (Running Amps)	4.25
Volume (L)	204
Temperature Range	-18...-20°C / 0...+4°C
Cooling Type	Fan
Defrost Type	Automatic
Lighting	Yes
Castors	No
Dual Temperature	Yes

**Features**

Dual temperature blast and storage chiller/freezer with digital controller and adjustable feet

- Drip tray must be manually emptied or plumbed into permanent drain
- Digital controller and temperature display
- Temperature probe
- 4 pre-settable programs
- Internal rounded corners for easy cleaning
- Shelf racks removable for easy cleaning
- Simple access to fans for cleaning
- Accepts 1/1 Gastronorm pans (not supplied)\*
- Chill capacity +70°C to +3°C 20 kg in 90 mins
- Freeze +70°C to -18°C 12kg in 240 mins
- Accepts up to 5 GN 1/1 size trays/pan in blast mode and up to 10 1/1 GN trays/pans as storage unit



# Catering Equipment - Electric

## Solid Top Cooker Range and Oven

### At a Glance

Model	H40A
Dimensions (W×D×H) mm	900×845×890
Voltage	400V/Three Phase/Neutral
El. Plug (Amps)	32
El. Consumption (kW)	14.7
Oven Temperature	100 - 250° C
Extra Details	Compatibility GN2/1*

### Features

- Full depth heavy cast iron hotplates
- Full width removable drip tray



\*Please see diagram for GN tray sizes on p. 85

## 6 Hot Plate Cooker and Oven

### At a Glance

Model	H41A
Dimensions (W×D×H) mm	900×845×890
Voltage	400V/Three Phase/Neutral
El. Plug (Amps)	32
El. Consumption (kW)	18.9
Oven Temperature	100 - 250° C
Extra Details	Compatibility GN2/1*

### Features

- 6 fast-acting circular hotplates
- Static oven
- Full width removable drip tray



\*Please see diagram for GN tray sizes on p. 85

## Full Height Fryer

### At a Glance

Model	H15D
Dimensions (W×D×H) mm	400×770×890
Voltage	400V/Three Phase/Neutral
El. Plug (Amps)	32
El. Consumption (kW)	20
Temperature	130 - 190° C
Extra Details	20 ltr. oil capacity

### Features

- Fast-acting safety thermostat
- Resting position for elements
- Single tank
- 2 baskets



## Flat Griddle

### At a Glance

Model	H91A
Dimensions (W×D×H) mm	800×770×890
Cooking Area (W×D) mm	780×490
Voltage	400V/Three Phase/Neutral
El. Plug (Amps)	16
El. Consumption (kW)	6.9
Temperature	80 - 290 °C

### Features

- Polished steel plate provides even heat distribution
- Comes with a stainless steel stand for waist-height convenience



## Half Ribbed Griddle

### At a Glance

Model	H91C
Dimensions (W×D×H) mm	800×770×890
Cooking Area (W×D) mm	780×490
Voltage	400V/Three Phase/Neutral
El. Plug (Amps)	16
El. Consumption (kW)	6.9
Temperature	80 - 290 °C

### Features

- Half-ribbed, half-polished steel plate provides even heat distribution
- Comes with a stainless steel stand for waist-height convenience



## Chargrill

### At a Glance

Model	H49C
Dimensions (W×D×H) mm	800×700×850
Cooking Area (W×D) mm	631×478
Voltage	400V/Three Phase/Neutral
El. Plug (Amps)	16
El. Consumption (kW)	8

### Features

- High performance cast iron burners and radiants
- Variable burner control with turndown position
- Heavy duty, double-sided cast iron brander bars



## Pasta Cooker

### At a Glance

Model	H29B
Dimensions (W×D×H) mm	400×730×850
Voltage	400V/Three Phase/Neutral
El. Plug (Amps)	16
El. Consumption (kW)	5.5
Water Inlet/Drain	In ½" BSP - Out 1" BSP
Temperature	70 - 100°C
Extra details	26 ltr. water capacity

### Features

- 3×1/3 baskets
- Single tank



## Bratt Pan

### At a Glance

Model	H48C
Dimensions (W×D×H) mm	1000×920×850
Voltage	400V/Three Phase/Neutral
El. Plug (Amps)	32
El. Consumption (kW)	17
Water Inlet/Drain	In ¾" BSP
Temperature	120 - 300°C
Extra Details	100 ltr. water capacity

### Features

- Manual tilt via front located handle
- Automatic power cut-off when pan tilts
- Integrated water faucet
- Duomat bottom



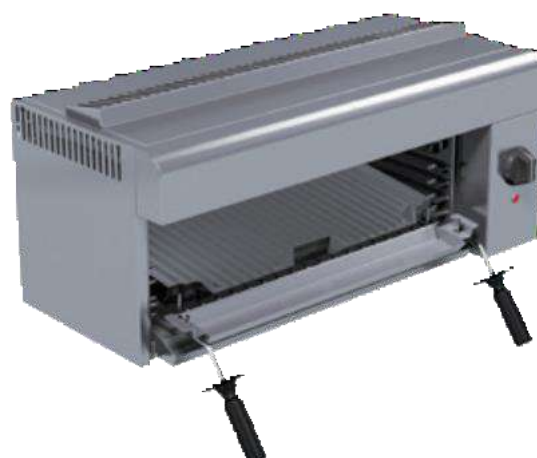
## Salamander Grill

### At a Glance

Model	H18A
Dimensions (W×D×H) mm	785×360×325
Voltage	240V/Single Phase/Neutral
El. Plug (Amps)	16
El. Consumption (kW)	3.9

### Features

- Stainless steel exterior with cast iron linings
- Double-cased with internal insulation
- Five position shelf runners
- Oil collection tray mounted on grid shelf



## Stockpot Stove

### At a Glance

Model	H72A
Dimensions (W×D×H) mm	570×590×515
Voltage	400V/Three Phase/Neutral
El. Plug (Amps)	16
El. Consumption (kW)	5
Extra details	400mm ring diameter

### Features

- Stainless steel



## 10 Grid Combination Oven

### At a Glance

Model	GN COMBI 10E
Dimensions (W×D×H) mm	920×910×1730
Voltage	400V/Three Phase/Neutral
El. Plug (Amps)	32
Consumption (kW)	17.3
Water Inlet/Drain	In 2 × ¾" BSP - Out 40mm diam.
Extra Details	10 × GN1/1 tray capacity*

### Features

- Digital display
- Mixed oven: combi or steam
- Can work without water connection in convection mode only
- Comes with stand



## 24 Grid Combination Oven

### At a Glance

Model	GN COMBI 24E
Dimensions (W×D×H) mm	1210×1100×1800
Voltage	400V/Three Phase/Neutral
El. Plug (Amps)	63
El. Consumption (kW)	27.5
Water inlet / drain	In 2 × ¾" BSP - Out 40mm diam.
Extra Details	24 × GN1/1 tray or 12 × GN2/1 tray capacity*

### Features

- Digital display
- Mixed oven: combi or steam
- Can work without water connection in convection mode only
- Comes with stand



## Double Deck Pizza Oven

### At a Glance

Model	H28B
Dimensions (W×D×H) mm	850×1250×1760
Voltage	400V/Three Phase/Neutral
El. Plug (Amps)	32
El. Consumption (kW)	12

### Features

- Comes with stand (stand dimensions included in overall dimensions)
- Refractory ceramic bottom
- Polished stainless steel
- Cooking chamber in aluminium-coated steel plate



## Gas Range

### Solid Top Cooker Range and Oven

### At a Glance

Model	H40B
Dimensions (W×D×H) mm	900×770×890
Gas Connection	¾" BSP
Gas Consumption (kW)	17.3
Oven Temperature	120 - 270° C
Burner Temperature	Up to 400° C
Extra Details	Compatibility GN2/1*

### Features

- Chef's solid top has removable bullseye



### 6 Hot Plate Cooker and Oven

### At a Glance

Model	H41B
Dimensions (W×D×H) mm	900×770×890
Gas Connection	¾" BSP
Gas Consumption (kW)	38.9
Oven Temperature Range	120 - 270° C
Extra Details	Compatibility GN2/1*

### Features

- Energy efficient, high performance 5.3kW (nett) burners
- Fast heat up means reduced waiting times





# Extractors

## Chimney Cooker Hood

### At a Glance

Model	EH21C
Dimensions (W×D×H) mm	600×450×740
Voltage	240V/Single Phase/Neutral
El. Plug (Amps)	13
El. Consumption (kW)	0.15

### Features

- 3 speed extractor fan
- Maximum extraction rate 375m<sup>3</sup>/h
- Dishwasher safe aluminium filter



## 1.2m Self-Standing Extractor Hood

### At a Glance

Model	EH21A
Dimensions (W×D×H) mm	1260×1040×2150
Voltage	240V/Single Phase/Neutral
El. Plug (Amps)	13
El. Consumption (kW)	1.5

### Features

- Self-supporting extractor hood for light or medium duty use



## 2.1m Self-Standing Extractor Hood

### At a Glance

Model	EH21D
Dimensions (W×D×H) mm	2100×1000×2500
Voltage	240V/Single Phase/Neutral
El. Plug (Amps)	16
El. Consumption (kW)	1

### Features

- Detachable legs
- Requires ducting
- Large self-supporting extractor hood for heavy duty use
- For electric equipment use only





# Convection Ovens

## Turbofan 4 Tray Convection Oven

### At a Glance

Model	H17C
Dimensions (W×D×H) mm	810×660×1510
Voltage	240V/Single Phase/Neutral
El. Plug (Amps)	13
El. Consumption (kW)	3.1
Temperature	50 - 260° C
Extra Details	Compatibility GN1/1*

### Features

- Electronic thermostat
- Grill element
- 4 wire oven racks
- Stainless steel



## Burco 4 Tray Convection Oven

### At a Glance

Model	H17D
Dimensions (W×D×H) mm	670×670×1620
Voltage	240V/Single Phase/Neutral
El. Plug (Amps)	13
El. Consumption (kW)	3
Temperature	60 - 260° C
Extra Details	Compatibility GN1/1*

### Features

- Manual thermostat
- 4 wire oven racks
- Stainless steel



## Table Top Appliances

## Single Raised Hotplate

### At a Glance

Model	H14A
Dimensions (W×D×H) mm	370×260×205
Voltage	240V/Single Phase/Neutral
El. Plug (Amps)	13
El. Consumption (kW)	1.5

### Features

- 3 boiling and 3 simmering positions
- Thermostat controlled





# Table Top Appliances

## Double Raised Hotplate

### At a Glance

Model	H14B
Dimensions (W×D×H) mm	565×400×120
Voltage	240V/Single Phase/Neutral
El. Plug (Amps)	13
El. Consumption (kW)	3
Extra Details	180mm sealed hotplates

### Features

- Variable heat control
- Automatic power reduction
- 180 mm / 7" sealed hotplates for easy cleaning



## Single Induction Hotplate

### At a Glance

Model	H10A
Dimensions (W×D×H) mm	330×430×100
Voltage	240V/Single Phase/Neutral
El. Plug (Amps)	13
El. Consumption (kW)	3
Extra Details	260mm ring diameter

### Features

- Durable stainless steel body
- Simple rotary control feature



## Double Induction Hotplate

### At a Glance

Model	H10B
Dimensions (W×D×H) mm	650×370×70
Voltage	240V/Single Phase/Neutral
El. Plug (Amps)	13
El. Consumption (kW)	3

### Features

- Black ceramic glass
- Instant heat
- Over-heat protection
- LED display



## Induction Wok

### At a Glance

Model	H10D
Dimensions (W×D×H) mm	450×600×265
Voltage	240V/Single Phase/Neutral
El. Plug (Amps)	13
El. Consumption (kW)	2.9

### Features

- Pan detection function cuts power when no pan is present
- Easy to use
- Boost function delivers power when it's most needed
- Pan included



## Table Top Fryer

### At a Glance

Model	H15A
Dimensions (W×D×H) mm	270×400×300
Voltage	240V/Single Phase/Neutral
El. Plug (Amps)	13
El. Consumption (kW)	2.8
Extra Details	5 ltr. oil capacity

### Features

- Adjustable thermostatic control
- 1 basket
- Single tank



## Table Top Fryer

### At a Glance

Model	H15B
Dimensions (W×D×H) mm	540×400×300
Voltage	240V/Single Phase/Neutral
El. Plug (Amps)	2 × 13
El. Consumption (kW)	5.6
Extra Details	2 × 5 ltr. capacity

### Features

- Adjustable thermostatic control
- 2 baskets
- Double tank



## Table Top Flat Griddle

### At a Glance

Model	H9A
Dimensions (W×D×H) mm	750×465×240
Voltage	240V/Single Phase/Neutral
El. Plug (Amps)	13
El. Consumption (kW)	2.9
Temperature	60 - 300° C

### Features

- Large cooking area giving high output
- 2 independently controlled cooking areas



## Small Table Top Flat Griddle

### At a Glance

Model	H9E
Dimensions (W×D×H) mm	550×465×240
Voltage	240V/Single Phase/Neutral
El. Plug (Amps)	13
El. Consumption (kW)	2.9
Temperature	50 - 240° C

### Features

- Adjustable thermostatic control
- Durable stainless steel body
- Single cooking area



## Table Top Pasta Cooker

### At a Glance

Model	H29A
Dimensions (W×D×H) mm	285×520×435
Voltage	240V/Single Phase/Neutral
El. Plug (Amps)	13
El. Consumption (kW)	2.9
Temperature	25 - 100° C
Extra Details	8 ltr. water capacity

### Features

- Stainless steel
- Thermal safety cut out



## Sous Vide

### At a Glance

Model	H73
Dimensions (W×D×H) mm	165×220×335
Voltage	240V/Single Phase/Neutral
El. Plug (Amps)	13
El. Consumption (kW)	2
Temperature	0 - 95° C

### Features

- Digital display



## Double Panini Grill

### At a Glance

Model	H31B
Dimensions (W×D×H) mm	540×390×210
Voltage	240V/Single Phase/Neutral
El. Plug (Amps)	13
El. Consumption (kW)	2.9

### Features

- Adjustable swivel head
- Variable heat control



## Conveyor Toaster

### At a Glance

Model	H54A
Dimensions (W×D×H) mm	370×640×400
Voltage	240V/Single Phase/Neutral
El. Plug (Amps)	13
El. Consumption (kW)	2.8
Extra Details	Produces 360 slices per hour

### Features

- Double feed



## 1000W Commercial Microwave

### At a Glance

Model	H12B
Dimensions (W×D×H) mm	425×510×335
Voltage	240V/Single Phase/Neutral
El. Plug (Amps)	13
El. Consumption (kW)	3

### Features

- LED internal light
- Stainless steel



## 750W Commercial Microwave

### At a Glance

Model	H12A
Dimensions (W×D×H) mm	500×400×300
Voltage	240V/Single Phase/Neutral
El. Plug (Amps)	13
El. Consumption (kW)	1.5

### Features

- 5 power settings
- Glass turntable ensures consistent cooking



## Table Top Oven

### At a Glance

Model	H17B
Dimensions (W×D×H) mm	360×420×250
Voltage	240V/Single Phase/Neutral
El. Plug (Amps)	13
El. Consumption (kW)	1.5

### Features

- Double glazed door
- Curved back to accommodate circular dishes



## Rice Cooker

### At a Glance

Model	H30
Dimensions (W×D×H) mm	460×400×345
Voltage	240V/Single Phase/Neutral
El. Plug (Amps)	13
El. Consumption (kW)	1.95
Output	13 ltr. / 52 portions of cooked rice*
Extra Details	13 ltr. cooked rice / 6 ltr. dry rice capacity

### Features

- Stainless steel
- Auto switch from cook to warm
- Rice measure included
- Cooking time: approx 40 minutes



\*All portion sizes are based on a 250ml cooked rice portion.

## Hot Holding Equipment

### 1.2m Plaine Top Hot Cupboard

#### At a Glance

Model	H42A
Dimensions (W×D×H) mm	1270×670×900
Voltage	240V/Single Phase/Neutral
El. Plug (Amps)	13
El. Consumption (kW)	1.5

#### Features

- Curly cable with plug park
- Digital temperature display



### 1.2m Bain Marie Hot Cupboard

#### At a Glance

Model	H24B
Dimensions (W×D×H) mm	1270×670×900
Voltage	240V/Single Phase/Neutral
El. Plug (Amps)	13
El. Consumption (kW)	3
Extra Details	3 × GN1/1 tray capacity*

#### Features

- Curly cable with plug park.
- Digital temperature display





# Hot Holding Equipment

## Hot Cupboard Gantry Heat Lamp

### At a Glance

Model	H23D
Dimensions (W×D×H) mm	1200×360×500
Voltage	240V/Single Phase/Neutral
El. Plug (Amps)	13
El. Consumption (kW)	1
Extra Details	Suitable for H42A or H24B

### Features

- Stainless steel
- Three built-in heat lamps underneath
- Magnetic feet



## Banquet Cart

### At a Glance

Model	H58
Dimensions (W×D×H) mm	1070×760×1810
Voltage	240V/Single Phase/Neutral
El. Plug (Amps)	13
El. Consumption (kW)	1.5

### Features

- Integral water reservoir to cabinet base
- Curly cable with plug park
- 4 shelves and supports



## Carvery Pads

### At a Glance

Model	H55A
Dimensions (W×D×H) mm	400×400×550
Voltage	240V/Single Phase/Neutral
El. Plug (Amps)	13
El. Consumption (kW)	0.7

### Features

- Portable
- Heated spiked top



## Double Gantry Light

### At a Glance

Model	H23F
Dimensions (W×D×H) mm	725×505×735
Voltage	240V/Single Phase/Neutral
El. Plug (Amps)	13
El. Consumption (kW)	1.3

### Features

- Height adjustable acrylic sneeze screen
- Attractive copper effect light shades
- Independent controls to base and gantry



## Triple Gantry Light

### At a Glance

Model	H23C
Dimensions (W×D×H) mm	805×505×735
Voltage	240V/Single Phase/Neutral
El. Plug (Amps)	13
El. Consumption (kW)	1.6

### Features

- Height adjustable acrylic sneeze screen
- Attractive copper effect light shades
- Independent controls to base and gantry



## Table Top Bain Marie

### At a Glance

Model	H24D
Dimensions (W×D×H) mm	360×580×280
Voltage	240V/Single Phase/Neutral
El. Plug (Amps)	13
El. Consumption (kW)	1.5
Extra Details	1 × GN1/1 or 3 × GN1/3 tray capacity*

### Features

- Adjustable temperature control





# Preparation Equipment

## Stainless Steel Table

### At a Glance

Model	H20A	H20B	H20C
Dimensions (W×D×H) mm	700×600×900	1200×600×900	1800×600×900

### Features

- Stainless steel undershelf



## Jackstack

### At a Glance

Model	H69
Dimensions (W×D×H) mm	600×600×1800
Extra Details	104 plate capacityw

### Features

- Swivel castors and brakes



## 3 Tier Trolley

### At a Glance

Model	H34C
Dimensions (W×D×H) mm	860×530×900

### Features

- Swivel castors, bumpers and brakes
- Raised handles



## Gastro Trolley

### At a Glance

Model	H34B
Dimensions (W×D×H) mm	530×390×1600
Extra Details	20×GN1 / 1 tray capacity*

### Features

- Swivel castors and breaks



## Table Top Blender

### At a Glance

Model	H43A
Dimensions (W×D×H) mm	200×245×345
Voltage	240V/Single Phase/Neutral
El. Plug (Amps)	13
El. Consumption (kW)	0.37
Extra Details	1 ltr. capacity

### Features

- Removable lid cap
- Crushes ice in seconds
- Pulse controls: high, low and off



## Stick Blender

### At a Glance

Model	H43B
Dimensions (dia. ×H) mm	diam.70×h395
Voltage	240V/Single Phase/Neutral
El. Plug (Amps)	13
El. Consumption (kW)	0.22
Extra Details	Shaft length - 160mm

### Features

- 4 blade emulsifying knife
- Lightweight
- Titanium coated blade



## Food Processor

### At a Glance

Model	H43C
Dimensions (W×D×H) mm	220×280×500
Voltage	240V/Single Phase/Neutral
El. Plug (Amps)	13
El. Consumption (kW)	0.55
Extra Details	2.9 ltr. capacity

### Features

- Speed: 1500rpm
- Powerful high performance induction motor



## 10 Ltr. Planetary Mixer

### At a Glance

Model	H44A
Dimensions (W×D×H) mm	410×485×635
Voltage	240V/Single Phase/Neutral
El. Plug (Amps)	13
El. Consumption (kW)	0.5
Extra Details	10 ltr. capacity

### Features

- Three speed settings
- Lever operated bowl lift
- Safety stop function
- Bowl guard
- Stainless steel bowl
- Not suitable for dough pizza



## 4 Ltr. Planetary Mixer

### At a Glance

Model	H44B
Dimensions (W×D×H) mm	230×400×300
Voltage	240V/Single Phase/Neutral
El. Plug (Amps)	13
El. Consumption (kW)	1.4
Extra Details	4 ltr. capacity

### Features

- 8 speed settings including a pulse function
- Automatic electronic speed control



## 22cm Meat Slicer

### At a Glance

Model	H36A
Dimensions (W×D×H) mm	445×445×457
Voltage	240V/Single Phase/Neutral
El. Plug (Amps)	13
El. Consumption (kW)	0.2
Extra Details	Blade diam. 220mm

### Features

- Integral sharpener
- Built-in guards
- Adjustable thickness control
- Anodized aluminium body



## 30cm Meat Slicer

### At a Glance

Model	H36B
Dimensions (W×D×H) mm	500×450×585
Voltage	240V/Single Phase/Neutral
El. Plug (Amps)	13
El. Consumption (kW)	0.2
Extra Details	Blade diam. 300mm

### Features

- Integral sharpener
- Built-in guards
- Adjustable thickness control
- Anodized aluminium body



## Soup Kettle

### At a Glance

Model	H61
Dimensions (W×D×H) mm	diam. 345×h360
Voltage	240V/Single Phase/Neutral
El. Plug (Amps)	13
El. Consumption (kW)	0.4
Temperature	35 - 95°C
Extra Details	10 ltr. capacity

### Features

- Temperature dial
- Hinged lid



## Scales

### At a Glance

Model	H44F
Dimensions (W×D×H ) mm	305×250×100
Voltage	240V/Single Phase/Neutral
El. Plug (Amps)	13
El. Consumption (kW)	0.1
Extra Details	12lbs / 6kg capacity



### Features

- Stainless steel
- Measures kg/g/lb/oz

## Pedal sack holder

### At a Glance

Model	H74
Dimensions (W×D×H) mm	430×300×880

### Features

- Stainless steel and chrome plated steel
- Free standing
- Foot pedal operation



## Insectocutor

### At a Glance

Model	H52
Dimensions (W×D×H) mm	650×860×320
Voltage	240V/Single Phase/Neutral
El. Plug (Amps)	13
El. Consumption (kW)	0.1

### Features

- Removable catchment tray
- Free standing or ceiling mounting





# Coffee and Drinks

## Double Bowl Juice Dispenser

### At a Glance

Model	H6A
Dimensions (W×D×H) mm	420×450×635
Voltage	240V/Single Phase/Neutral
El. Plug (Amps)	13
El. Consumption (kW)	0.4
Temperature	+6...+12°C
Extra Details	2 × 12 ltr. capacity

### Features

- Adjustable thermostat control
- Non-drip stainless steel taps
- Froth-free stirring



## 26Kg Ice Maker

### At a Glance

Model	H63B
Dimensions (W×D×H) mm	420×510×700
Voltage	240V/Single Phase/Neutral
El. Plug (Amps)	13
El. Consumption (kW)	0.4
Water Inlet/Drain	In ¾" BSP - Out 40mm diam.
Output	26kg in 24 hours

### Features

- Standard ice cube: 18g
- 6kg storage



## 90Kg Ice Maker

### At a Glance

Model	H63C
Dimensions (W×D×H) mm	740×600×1120
Voltage	240V/Single Phase/Neutral
El. Plug (Amps)	13
El. Consumption (kW)	0.9
Water Inlet/Drain	In ¾" BSP - Out 40mm diam.
Output	95kg in 24 hours

### Features

- Standard ice cube: 18g
- 55kg storage



## Water Dispenser

### At a Glance

Model	H7
Dimensions (W×D×H) mm	300×330×1400
Voltage	240V/Single Phase/Neutral
El. Plug (Amps)	13
El. Consumption (kW)	0.6
Extra Details	19 ltr. bottle capacity

### Features

- Dual tap
- 2 canisters of water included



## Filter Coffee Maker

### At a Glance

Model	H11B
Dimensions (W×D×H) mm	210×390×470
Voltage	240V/Single Phase/Neutral
El. Plug (Amps)	13
El. Consumption (kW)	2
Extra Details	Produces up to 120 cups per hour or 1.8 ltr. jug in 5 minutes

### Features

- Upper and lower hotplates
- Manual water fill



## Nespresso Capsule Coffee Machine

### At a Glance

Model	H11C
Dimensions (W×D×H) mm	120×230×320
Voltage	240V/Single Phase/Neutral
El. Plug (Amps)	13
El. Consumption (kW)	1.3

### Features

- Automatic volume control
- Automatic power-off
- High pressure pump
- Capsules not included



## Kettle

### At a Glance

Model	H45
Dimensions (W×D×H) mm	135×250×255
Voltage	240V/Single Phase/Neutral
El. Plug (Amps)	13
El. Consumption (kW)	2.5
Extra Details	1.5 ltr. capacity

### Features

- Automatic switch off
- Visible water gauge



## 25-30 Ltr. Water Boiler

### At a Glance

Model	H46A
Dimensions (W×D×H) mm	435×440×520
Voltage	240V/Single Phase/Neutral
El. Plug (Amps)	13
El. Consumption (kW)	2.6
Extra Details	25-30 ltr. water capacity

### Features

- Polished stainless steel body
- Non-drip tap
- Manual fill



## 10 Ltr. Water Boiler

### At a Glance

Model	H46C
Dimensions (W×D×H) mm	255×450×560
Voltage	240V/Single Phase/Neutral
El. Plug (Amps)	13
El. Consumption (kW)	3
Water Inlet/Drain	in ¾" BSP
Temperature	70 - 96 °C
Extra Details	10 ltr. water capacity

### Features

- Stainless steel
- Auto fill
- Output: 3 ltr. per hour with 10 ltr. rapid draw off





# Water Heaters

## Gas Rinnai Water Heater

### At a Glance

Model	H53
Dimensions (W×D×H) mm	1100×500×1210
Voltage	240V/Single Phase/Neutral
El. Plug (Amps)	16
El. Consumption (kW)	2
Gas Connection	¾" BSP
Gas Consumption (kW)	63
Water Inlet/Drain	Cold in 22mm - Hot out 22mm



### Features

- Flow rate: up to 37 ltr. per minute, 820 ltr. per hour
- Minimum operating pressure 1.0 bar

## Electric Instantaneous Water Heater

### At a Glance

Model	H53B
Dimensions (W×D×H) mm	230×100×470
Voltage	400V/Three Phase/Neutral
El. Plug (Amps)	32 Amp
El. Consumption (kW)	27
Water inlet / drain	Cold in 15mm - Hot out 15mm

### Features

- Electronic control with dial temperature adjust
- Compact design and easy to install



## Electric Under Sink Water Boiler

### At a Glance

Model	H53C
Dimensions (W×D×H) mm	360×330×360
Dimensions (W×D×H) mm	350×370×510 including copper connection pipes
Voltage	240V/Single Phase/Neutral
El. Consumption (kW)	3
El. Plug (Amps)	13 Amp
Water inlet / drain	Cold in 15mm - Hot out 15mm
Extra Details	15ltr. water capacity

### Features

- Easy to operate with mechanical dial
- 'E' setting on the dial to optimise comfort and energy saving
- Fast reheat times





# Sinks

## Self Contained Sink

### At a Glance

Model	H21C
Dimensions (W×D×H) mm	555×505×860
Voltage	240V/Single Phase/Neutral
El. Plug (Amps)	13
El. Consumption (kW)	3
Extra Details	25 ltr. water capacity

### Features

- Foot pump installed
- Removable lid to manually refill
- Heating element built-in
- Manual fill



## Single Bowl Stainless Steel Sink

### At a Glance

Model	H21A
Dimensions (W×D×H) mm	1000×600×900
Water Inlet/Drain	In ½" BSP - Out 40mm diam.

### Features

- Complete with undershelf
- Rear upstand and raised lip
- Angled draining board



## Double Bowl Stainless Steel Sink

### At a Glance

Model	H21B
Dimensions (W×D×H) mm	1500×600×900
Water Inlet/Drain	In ½" BSP - Out 40mm diam.

### Features

- Complete with undershelf
- Rear upstand and raised lip
- Angled draining rack



## Plumbed Hand-Wash Basin

### At a Glance

Model	H21D
Dimensions (W×D×H) mm	300×310×1500
Water Inlet/Drain	In ½" BSP - Out 40mm diam.

### Features

- Supplied with tissue and soap dispenser



## Single Pot Sink

### At a Glance

Model	H21F
Dimensions (W×D×H) mm	1200×650×900
Water inlet / drain	In ½" BSP - Out 40mm diam.
Bowl Size (W×D×H)mm	700×500×350

### Features

- Complete with undershelf



## Double Pot Sink

### At a Glance

Model	H21G
Dimensions (W×D×H) mm	1800×650×900
Water inlet / drain	In ½" BSP - Out 40mm diam.
Bowl Size (W×D×H)mm	700×500×350

### Features

- Complete with undershelf





# Dish and Glass Washers

## Dish / Glass Washer 50x50

### At a Glance

Model	H47B
Dimensions (W×D×H) mm	580×610×830
Voltage	240/Single Phase/Neutral
El. Plug (Amps)	13
El. Consumption (kW)	2
Water Inlet/Drain	In ¾" BSP - Out 40mm diam.

### Features

- Cycle time: 60 - 180 seconds
- Double skinned construction (door only)
- 50×50 basket, rinse dispenser, detergent dispenser and drain pump built-in
- Loading height: 360mm



## Dish / Glass Washer 50x50

Three phase upon request

### At a Glance

Model	H47B
Dimensions external (W×D×H) mm	580×610×830
Voltage	400V/Three Phase/Neutral
El. Plug (Amps)	16
El. Consumption (kW)	6
Water Inlet/Drain	In ¾" BSP - Out 40mm diam.

### Features

- Cycle time: 60 - 180 seconds
- Double skinned construction (door only)
- 50×50 basket, rinse dispenser, detergent dispenser and drain pump built-in
- Loading height: 360mm



## Pass-through Dishwasher

### At a Glance

Model	H47A
Dimensions (W×D×H) mm	720 / 2020 × 815 × 1510 / 2000
Voltage	400V/Three Phase/Neutral
El. Plug (Amps)	16
El. Consumption (kW)	7
Water Inlet/Drain	In ¾" BSP - Out 40mm diam.

### Features

- Cycle time: 60 - 90 seconds
- 50×50 basket, rinse dispenser, detergent dispenser, drain pump built-in and side tables
- Upon request, we can supply with pre-wash sink (H47A KIT)



## Pre-Rinse Table for Pass-Through Dish Washer

### At a Glance

Model	H47A Kit
Dimensions (W×D×H) mm	700×635×890
Water Inlet/Drain	In ½" BSP - Out 40mm diam.

### Features

- Includes pre-rinse tap
- Robust stainless steel construction
- Adjustable legs



## Conveyor Dishwasher 50x50

### At a Glance

Model	H47D
Dimensions (W×D×H) mm	1350/4000×785×1970
Voltage	400V/Three Phase/Neutral
El. Plug (Amps)	63
El. Consumption (kW)	36.2
Water Inlet/Drain	In 2×¾" BSP - Out 50mm diam.
Output	1980 dishes per hour

### Features

- 50×50 basket and side tables
- Please specify if you require a left to right or right to left operation direction setup on enquiry
- This unit can be setup to feed either from the left or from the right, please specify on enquiry



All items are subject to VAT  
together with delivery and  
collection charges. All items are  
subject to Creative Events terms  
and conditions (copy available  
upon request)

For further information please  
contact **Richard Cohen** at  
**[richard@creative-events.uk](mailto:richard@creative-events.uk)** or  
call **020 3773 4442**

Creative Events  
Central Point  
45 Beech Street, London  
EC2Y 8AD  
T: 020 3773 4442  
M: 07971 291795